

# timeware® ADT Edition



**“using the same badge for ADT Access Control and timeware® Time & Attendance ensured the smooth integration of both systems...”**

Bright Osu,  
Operations Manager,  
Ghana Breweries.

**Price: Contact your ADT Distributor**

Compatible with the following software:

**timeware® Report Designer**

Compatible with these products:

**t6-1010 Access Control**  
**t6-2010 Magstripe**  
**t6-2020 Barcode**  
**t6-3010 Slotless**  
**t6-5010 Biometric**

## Capacity

**MSDE 2000 (shipped free with product)**

Up to 500 employees

**SQL Server 2000**

Up to 5000 employees

## Database

**MSDE 2000 (shipped free with product)**

MSDE 2000 is a royalty-free, redistributable database engine that is fully compatible with SQL Server. MSDE 2000 is designed to run on Microsoft Windows® 98, Windows Millennium Edition (Windows Me), Microsoft Windows NT® Workstation version 4.0 (with Service Pack 5 or later), Windows 2000 Professional and Windows XP as an embedded database for custom applications that require a local database engine.

**SQL Server 2000**

SQL Server 2000 provides a powerful and comprehensive data management platform. Benchmarked for scalability, speed, and performance, SQL Server 2000 is a fully enterprise-class database product, providing core support for Extensible Markup Language (XML) and Internet queries.

## Features

**With timeware® ADT Edition it is easy to:**

- Check your employee records are up to date, accurate and secure;
- Keep track of your workforce's holidays and absences or periods of sickness, qualifications and skills;
- Instantly call up on screen details of an individual employee's pay rate and rises, job history, medical details, banking details, disciplinary and grievance history, or next of kin.
- Merge employee information with MS Word format templates for letters or contracts.
- Produce charts, graphs and reports from your employee data and export information to MS Office applications. Many different reports and queries are already built in, and you can add your own.
- timeware® server components can be run as services.

## PC Requirements

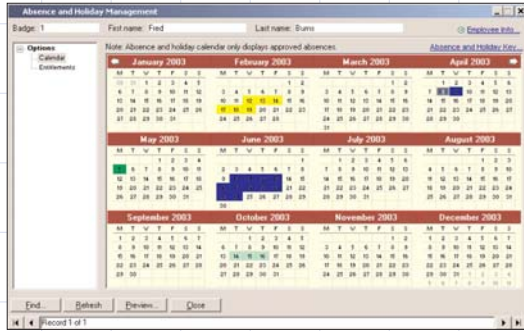
**Minimum:**

Pentium III Processor 400Mhz  
Microsoft® Windows™ 98 128Mb of RAM  
Microsoft® Windows™ 2000/XP 256Mb of RAM  
100Mb of available hard-drive space  
Colour monitor, 800x600 or greater resolution  
CD-ROM drive  
Network speed 10/100 Mbps

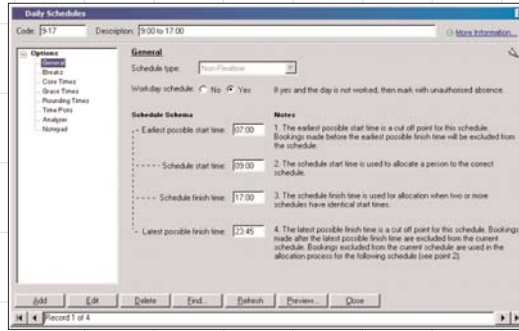
**Recommended:**

Pentium III Processor 1GHz  
Microsoft® Windows™ 98 128Mb of RAM  
Microsoft® Windows™ 2000/XP 256Mb of RAM  
200Mb of available hard-drive space  
Colour monitor, 1024x768 or greater resolution  
CD-ROM drive  
Network speed 100 Mbps

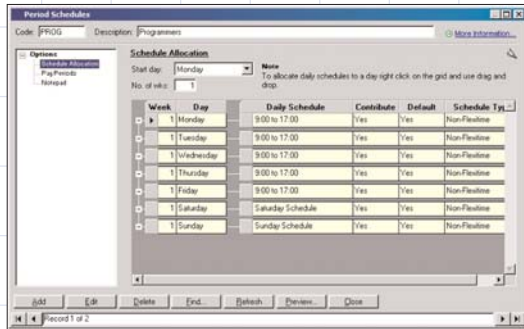
# timeware® ADT Edition - Screen shots



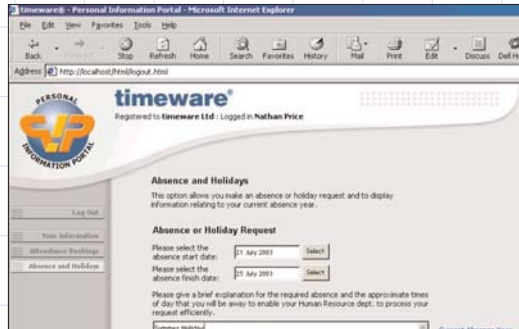
Absence and Holiday Management



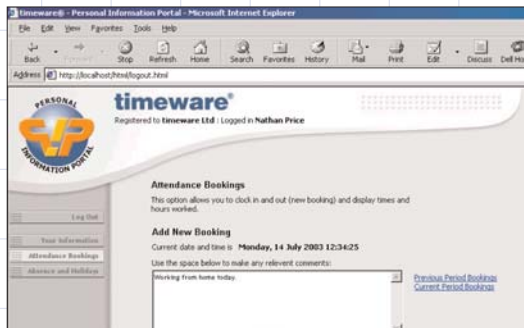
Daily Schedules



Period Schedules



PIP Absence & Holidays



PIP Attendance & Absence